

OUR APPROACH

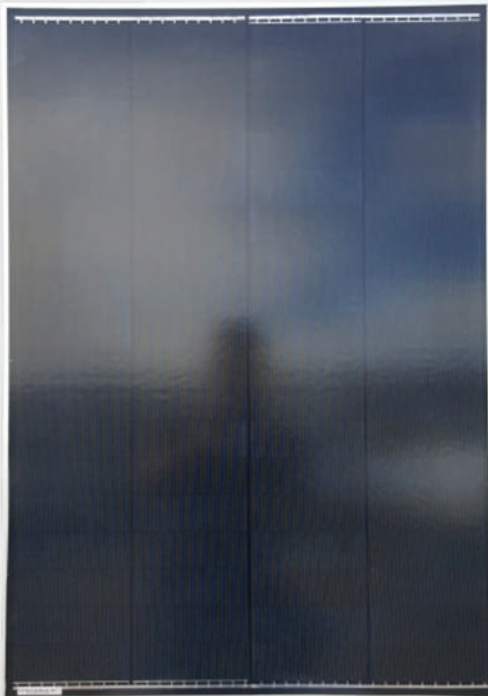
ISELI has been founded by experts who share the same values for renewable, for sustainability and for excellence. Thanks to a team cumulating more than 50 years' experience in the PV modules manufacturing sector, ISELI designs and manufactures its TOP class products with the objectives to always provide the best Quality to its customers.

At ISELI, we exceed and re-invent the standards of the industry with one objective: Customer satisfaction.



ENERSOL IMBRICATED CELL MONO SERIES

100 WP



+ 0- /+5 POSITIVE TOLERANCE

↔ HIGH QUALITY

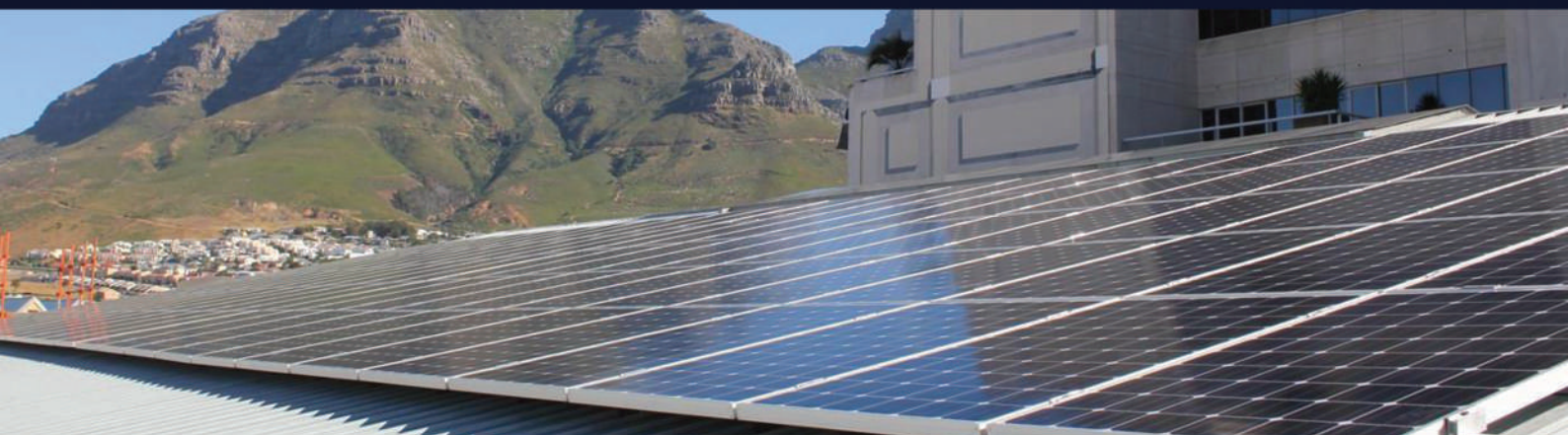
✓ HIGH MODULE EFFECIENCY

15 Year Performance Warranty
5 Year Product Warranty

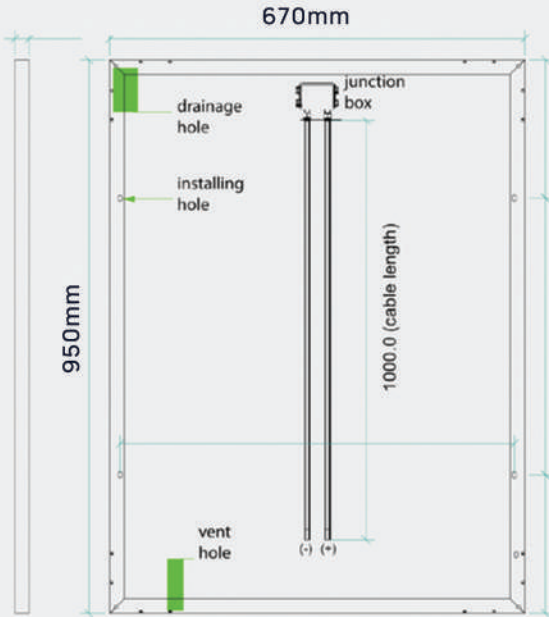
BLACK (FRONT) - WHITE (BACK)



Thanks to the use of Imbricated solar cell, our panels are configured with the shingled cell array to form super cells which are arranged to efficiently use the area of the solar module, reduce series resistance, and increase module efficiency.

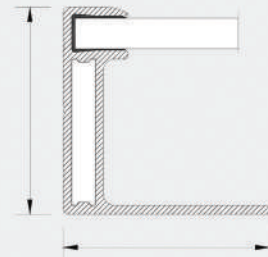
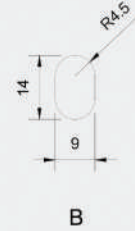


MONO SERIES IMBRICATED 100 WP



GENERAL CHARACTERISTICS

Cell	Imbricated Monocrystalline Solar Cell 156.75 x 104mm
No. of Cells (connections)	36 (4x9)
Panel Dimensions	950 x 670 x 30mm
Weight	8.8 kg
Connectors and cable	IP65 1 bypass-diodes 1m cables



TEMPERATURE COEFFICIENCIES

Temperature Coefficients I_{sc}	+0.04%/k
Temperature Coefficients U_{oc}	-0.30%/k
Temperature Coefficients P_{mpp}	-0.40%/k
Nominal Cell Operating Temp	48°C±2°C

ELECTRIC PERFORMANCE at STC*

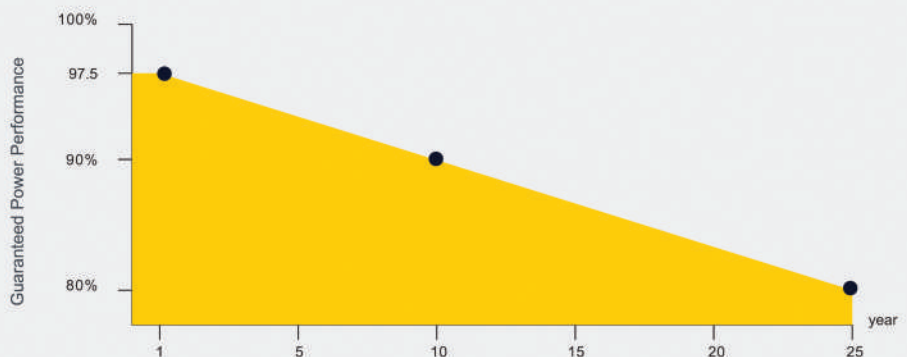
Nominal Power	0/+5WP
MPP Voltage	18.0 V
MPP Current	5.58 A
Open Circuit Voltage	22.2 V
Short Circuit Current	6.58 A

LIMITS

System Max Voltage	1500 V
Reverse Current Max	20 A
Operating Temp	-40°C - 85°C
Maximum Load	550 kg/m

*Standard Test Conditions: 1000W/m² irradiance, 25°C and AM = 1.5

HIGH PERFORMANCE



15

15 Years
Performance Warranty

5

5 Years
Product Warranty